

NC Mitre Saw type GLS-2

Workpiece feeder individually adjustable to various profile widths

Available with additional work units for punching, drilling, sawing and milling

With servo controlled angle adjustment in two planes



Suitable for connection of a label or laser printer

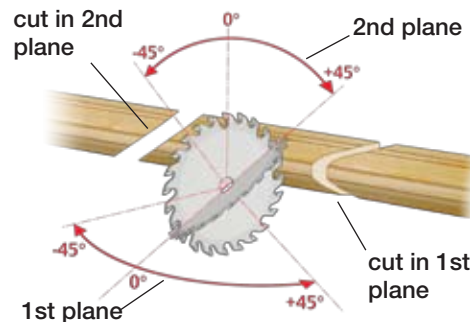
Outfeed belt for the machined profiles



Materials: timber, mdf, aluminium, vinyl

The NC Mitre Saw STEGHERR type GLS-2 can mitre-cut glass strips, water drainage channels or similar profiles of wood, aluminum or PVC at any angle between +45° and -45°.

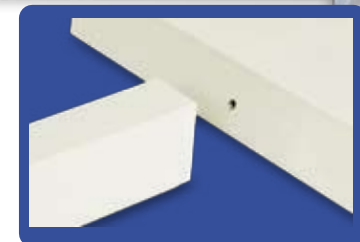
Speed adjustment of the working stroke over servo axis. Accurate positioning of the workpieces over a NC pusher. The cutter heads are positioned over servo axes at the angle stored in the machine program.



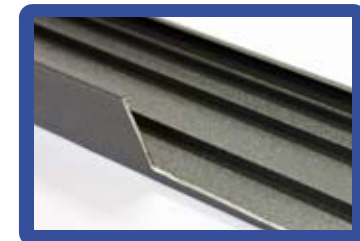
The machine can be upgraded to fully automatic operation by mounting customized workpiece conveyors.

The machine can be equipped with additional work units and ink jet or laser printers.

Operator friendly machine program for easy operation both in the manual and the online mode.

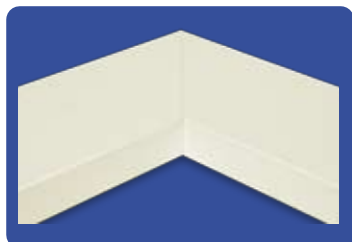


Drilling for connection pieces

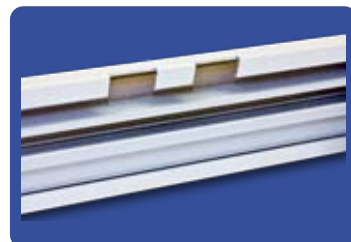


Notching with additional punching unit

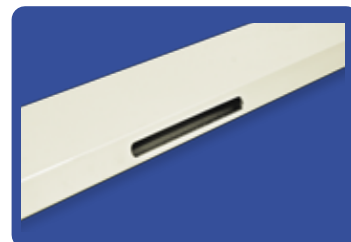
Special jobs on aluminum profiles machined with additional milling units:



45° cuts



Cut-outs for connection pieces



Aeration slots



Water drainage channels

Stegherr Maschinenbau GmbH & Co KG

Fabrikstraße 2-4
D-93128 Regenstauf

Phone: +49-(0)9402-501-0

Fax: +49-(0)9402-501-49

email: sales@stegherr.net

www.stegherr.net

INNOVATION