

# Profile Processing Center GLS-2

*Workpiece feeder individually adjustable to various profile widths*

**optimized online controlled  
cutting – punching – milling  
drilling – printing**

**With servo controlled angle adjustment in two planes**

*Suitable for connection of a label or laser printer*

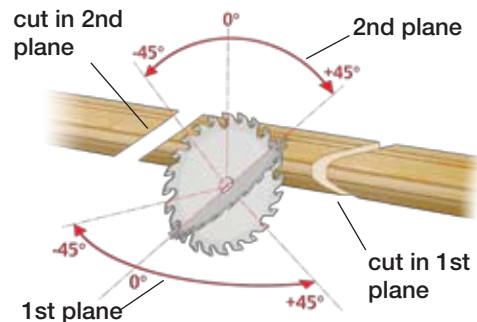
*Outfeed belt for the machined profiles*



*Materials: timber, mdf, aluminium, vinyl*

The NC Mitre Saw STEGHERR type GLS-2 can mitre-cut glass strips, water drainage channels or similar profiles of wood, aluminum or PVC at any angle between +45° and -45°.

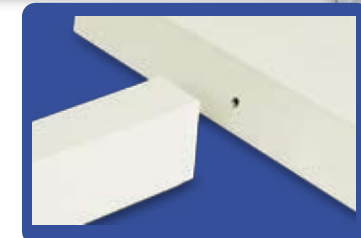
Speed adjustment of the working stroke over servo axis. Accurate positioning of the workpieces over a NC pusher. The cutter heads are positioned over servo axes at the angle stored in the machine program.



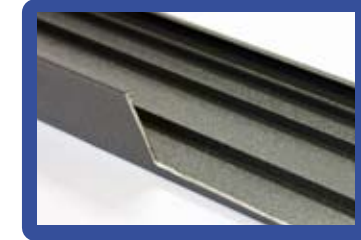
The machine can be upgraded to fully automatic operation by mounting customized workpiece conveyors.

The machine can be equipped with additional work units and ink jet or laser printers.

Operator friendly machine program for easy operation both in the manual and the online mode.

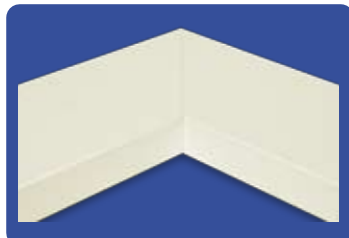


*Drilling for connection pieces*

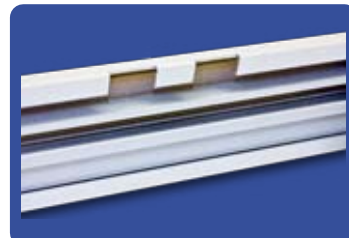


*Notching with additional punching unit*

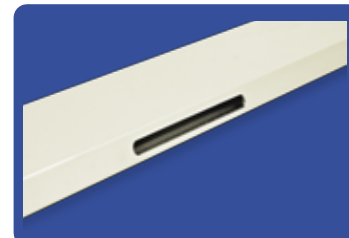
*Special jobs on aluminum profiles machined with additional milling units:*



*45° cuts*



*Cut-outs for connection pieces*



*Aeration slots*



*Water drainage channels*

**Stegherr Maschinenbau GmbH & Co KG**

Fabrikstraße 2-4  
D-93128 Regenstauf

Telefon: +49-(0)9402-501-0  
Telefax: +49-(0)9402-501-49

email: [info@stegherr.net](mailto:info@stegherr.net)  
[www.stegherr.net](http://www.stegherr.net)

INNOVATION