

V-Notching Saw type KSS



**45° - V-Notches
in one Cycle**

Workpiece feeder individually adjustable to various profile widths

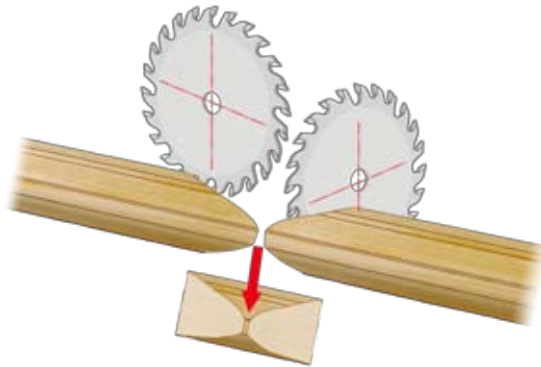
Mobile control panel for improved usability

Outfeed table for processed pieces

The KSS machine cuts V-notches in glass strips, water drainage channels or similar profiles of wood, aluminum, MDF or PVC at +/- 45°.

The saw blades are mounted at a 90 degree angle so that the profiles are notched in one cycle.

The NC pusher ensures an absolutely accurate positioning of the components.

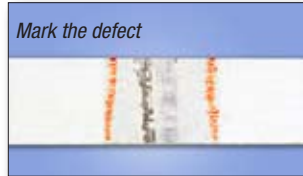


Defect detection and length optimization are available as optionals. Connection of a label or a laser printer are possible as well.

The machine can be upgraded to fully automatic operation by mounting customized workpiece conveyors.

The operator friendly machine program ensures easy operation both in the manual and in the online mode.

Defect detection



**Materials: Wood, MDF,
Aluminum, PVC**



Other NC Mitre Saw types:



NC Mitre Saw GLS for cutting angles up to +/- 81°



NC Mitre Saw GLS-2 with angle adjustment in two planes

Stegherr Maschinenbau GmbH & Co KG

Fabrikstraße 2-4
D-93128 Regenstauf

Phone: +49-(0)9402-501-0
Fax: +49-(0)9402-501-49

email: sales@stegherr.net
www.stegherr.net

INNOVATION